



Priming Assisted Centrifugal Pump w/Autostart Model PAH6A60-6090H Size 10" x 6"



Total Head		Capacity of Pump in U.S. Gallons per Minute (GPM) at Continuous Performance			
P.S.I.	Feet				
135.2	312	1000	1000	1000	1000
121.4	280	1550	1750	1750	1750
104.0	240	1800	2700	3100	3100
86.7	200	1900	3050	4100	4100
69.4	160	1975	3200	3975	4600
52.0	120	2025	3250	4000	4825
34.7	80	2050	3300	4025	4900
17.3	40	2100	3350	4050	4925
Suction Lift		25'	20'	15'	10'

PUMP SPECIFICATIONS

Size: 10" x 6" (254 mm x 152 mm) Flanged.
Casing: Ductile Iron 65-45-12.
 Maximum Operating Pressure 231 psi (1593 kPa).*
Enclosed Type, Two Vane Impeller: Ductile Iron 65-45-12.
 Handles 3" (76,2 mm) Diameter Spherical Solids.
Suction Head: Gray Iron 30.
Suction Spool: Gray Iron 30.
Impeller Shaft: Alloy Steel 4150M.
Replaceable Wear Ring: Ductile Iron 65-45-12.
Bearing Pedestal: Gray Iron 30.
Seal Plate: Gray Iron 30.
Seal: Mechanical, SAE 30 Non-Detergent Oil-Lubricated. Silicon Carbide Rotating Face and Stationary Seat. Fluorocarbon Elastomers (DuPont Viton® or Equivalent). Stainless Steel 316 Cage and Stainless Steel 18-8 Spring. Maximum Temperature of Liquid Pumped 160° F (71° C).*
Shaft Sleeve: Stainless Steel 303/304.
Priming Chamber: Gray Iron 30 Housing w/Stainless Steel Float and Linkage.
Discharge Check Valve: Ductile Iron Housing w/Buna-N Flapper.
Radial Bearing: Open Roller.
Thrust Bearing: Open Double Ball.
Bearing Cavity Lubrication: Lithium EP2 Grease.
Gaskets: Vegetable Fiber.
O-Rings: Buna-N.
Hardware: Standard Plated Steel.
Seal Cavity Oil Level Sight Gauges.
**Consult Factory for Applications Exceeding Maximum Pressure and/or Temperature Indicated.*
Standard Equipment: Strainer. Gear-Driven Air Compressor. Hoisting Bail. Combination Skid Base w/Fuel Tank. Single Ball Type Float Switch.**
Optional Equipment: Battery. Heated Priming Chamber Kit. Suction Vacuum and Discharge Pressure Gauge Kit. High Speed (55 MPH/89 KM/H) Tandem Axle Pneumatic-Tired Wheel Kit w/w₀ DOT-Approved Lights and Electric Brakes. Tandem Axle Over-the-Road Trailer (Meets DOT Requirements) Available w/Either Electric or Hydraulic Surge Brakes, Running Lights, Jack Stands and Safety Chains/Cables. EPS w/Submersible Transducer Liquid Level Sensor (50 Ft. [15M] Cable Standard, Alternate Lengths Available). Threaded Flange Kit.
****50 Ft. (15 m) Standard Length; Dual Switches and Alternate Cable Lengths Available From the Factory.**



SHOWN WITH OPTIONAL WHEEL KIT

WARNING!

Do not use in explosive atmosphere or for pumping volatile flammable liquids.

ENGINE SPECIFICATIONS

Model: John Deere 6090H "Power Tech."
Type: Six Cylinder, Four Cycle, Charge Air Cooled, Enclosed, Liquid Cooled Diesel Engine.
Displacement: 548 Cu. In. (9,0 liters).
Governor: Electronic Isochronous.
Lubrication: Forced Circulation.
Air Cleaner: Dry Type.
Fuel Tank: 262 U.S. Gals. (992 liters).
Full Load Operating Time: 18.1 Hrs.
Starter: 12V Electric.
Standard Features: Low Oil Pressure, High Coolant Temperature and Start Failure Safety Shut Down Switches/Indicators. Throttle Control. Autostart Instrument Panel Includes: Tachometer, Voltmeter, Hourmeter, Coolant Temperature and Oil Pressure Indicators, Manual/Stop/Auto Key Switch, 10 Amp Fuse, Audible Startup Warning Delay. Muffler w/Weather Cap.

JOHN DEERE PUBLISHED PERFORMANCE:
 Maximum Gross BHP (Intermittent)
 375 (280 kW) @ 2200 RPM



GORMAN-RUPP PUMPS

www.grpumps.com

Specifications Subject to Change Without Notice

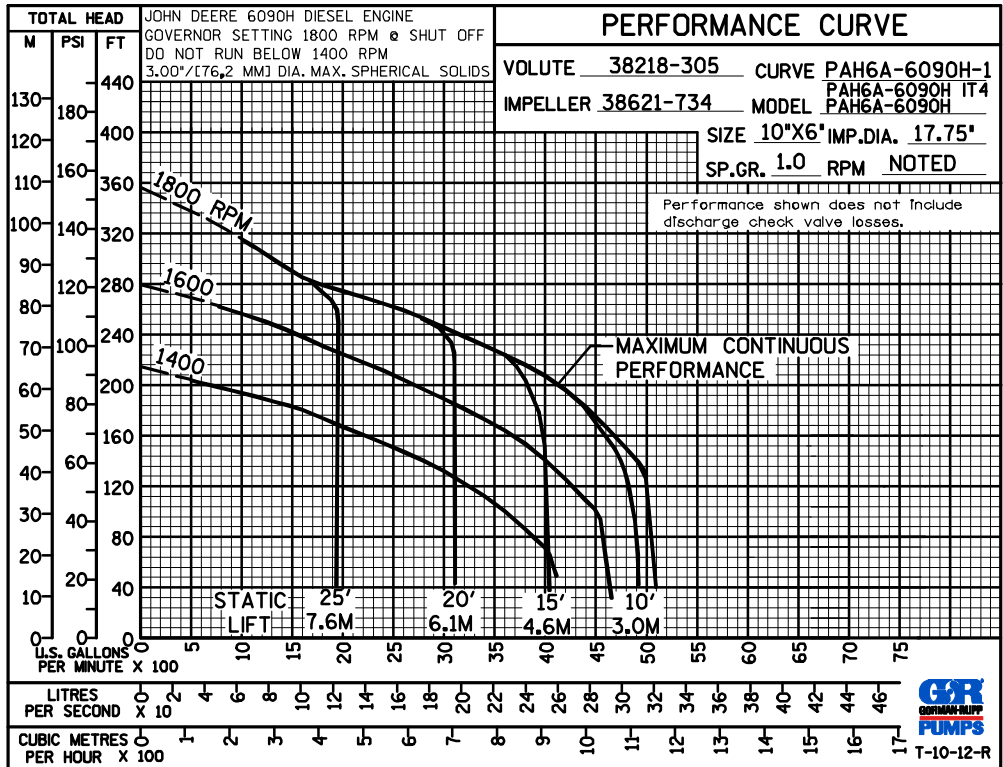
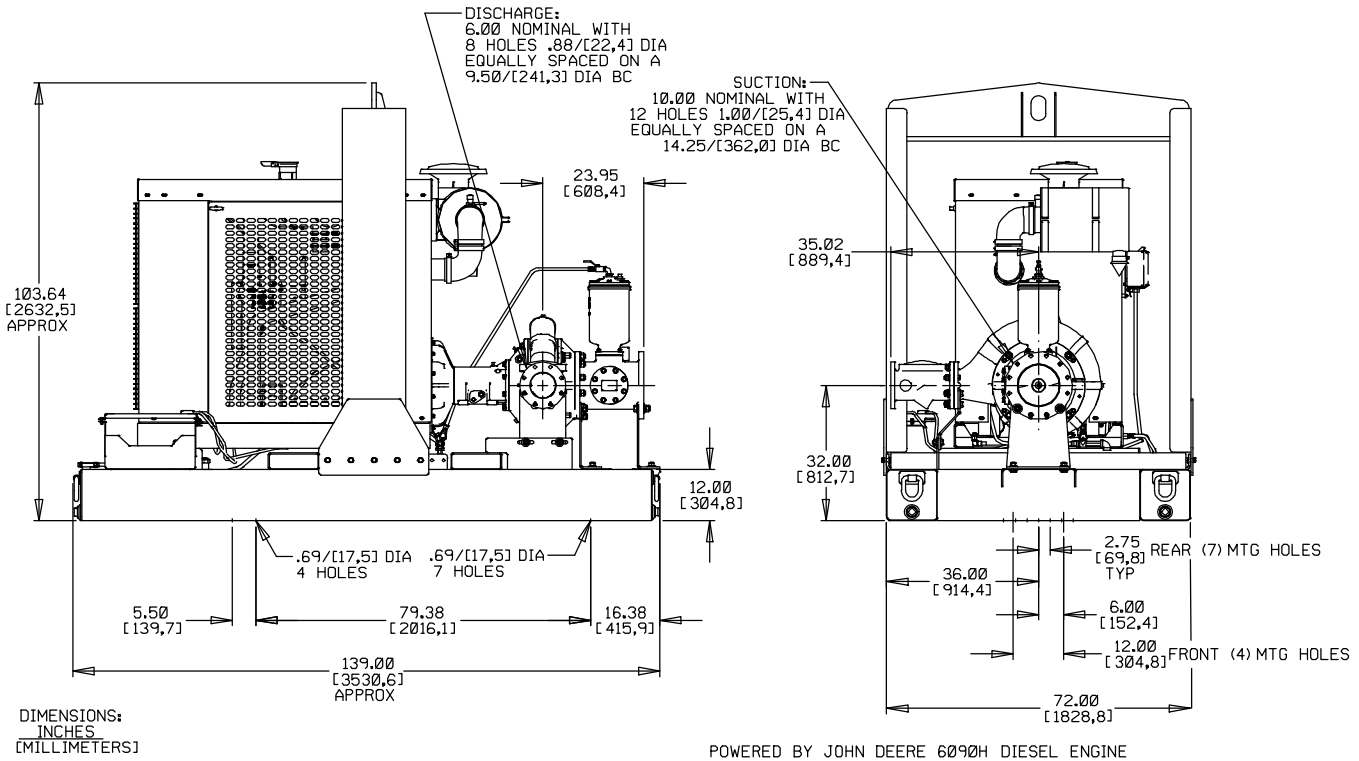
Printed in U.S.A.

Specification Data

SECTION 43, PAGE 330

APPROXIMATE DIMENSIONS and WEIGHTS

	SKID BASE	WHEEL KIT
NET WEIGHT:	9650 LBS. (4377 KG.)	10150 LBS. (4604 KG.)
SHIPPING WEIGHT:	10150 LBS. (4604 KG.)	10150 LBS. (4604 KG.)
EXPORT CRATE SIZE:	719 CU. FT. (20 CU. M.)	



GORMAN-RUPP PUMPS

www.grpumps.com

Specifications Subject to Change Without Notice

Printed in U.S.A.